

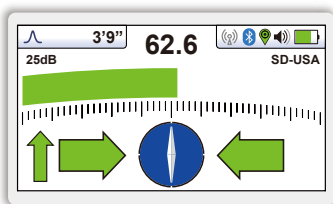


vLoc3-5000 UTILITY LOCATOR

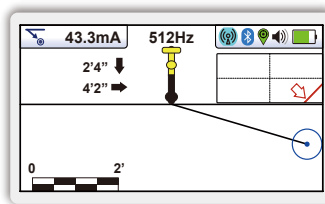
- Internal GPS for Mapping and GIS
- SD & SiS for positive line identification
- Real-time colour-coded distortion alerts
- Innovative Vector Locate Mode
- Open Cloud Data Sync
- Bluetooth & WiFi connectivity

The **vLoc3-5000 receiver** is the pinnacle in utility locating instruments. The vLoc3-5000 is the only locator to combine Signal Select™ (SiS), Signal Direction (SD), real-time EMF distortion alerts, self-testing and internal GPS into one locator. Locate and GPS data are stored in the locator and in the free VMMap Cloud to create real-time maps. The receiver has a broad range of active frequencies from 98Hz to 200kHz and passive modes of power and radio. SD (Signal Direction) and SiS (Signal Select™) are standard to help identify the target line in congested areas.

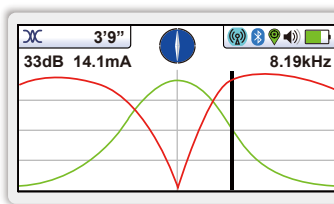
In addition to the classic locate screens the vLoc3-5000 includes new locate screens like the Vector Locate screen for fully automatic non-walk over locating, Transverse Graph showing both peak and null simultaneously providing immediate measurement of signal distortion, Plan View showing the relative orientation of the target line at any angle, and a new graphical sonde screen with guidance arrows leading to the sonde location even when it is vertical. The receiver is equipped with Bluetooth and WiFi as standard. This enables communication with external data loggers, GPS devices or a smartphone with the free VMMap app installed for data synchronization.



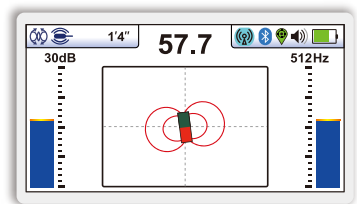
Classic Screen - with on-the-fly colour-coded distortion alert and signal strength bar graph, compass and direction arrows



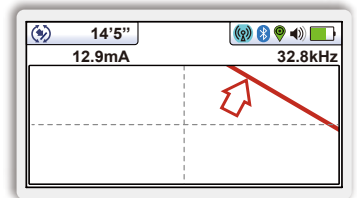
Vector Locate - shows the orientation, line position, and distance of the line in relation to the



TTransverse Graph - displays the field distortion with simultaneous peak and null measurement



Sonde Locate - 360° arrow guidance to the sonde with distinct symbols and display of depth of cover



Plan View Screen - displays the theoretical line in 2D from above ground in omnidirectional mode with automatic gain

Li-ion Batteries included

- Typically 27h intermittent use
- Can also be operated with Alkaline Batteries

USB Data Port

- Update the receivers firmware
- Download data logs

Accessory Plugin Port

- Remote Antenna for positive line identification
- A-Frame Fault Locating Antenna
- 12V Charging lead
- Charge Li-ion battery

Two triaxial omnidirectional 3D antenna arrays for precise locating

Optional Plug-in Marker Locator Adapter (MLA)



Built-in GPS for mapping

Ultra Bright Color Display

- High visibility 4.3"/10cm LCD
- Sensor-controlled backlighting

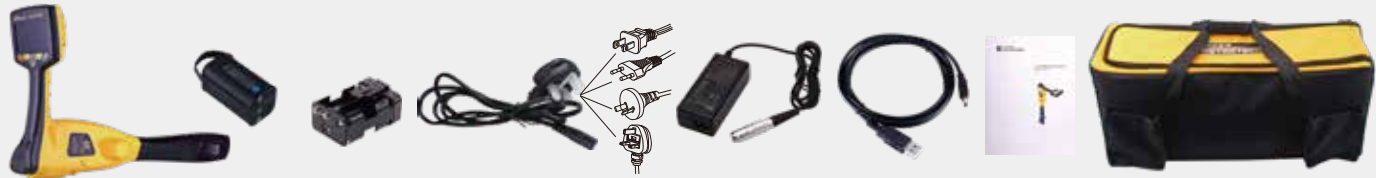


Data Management

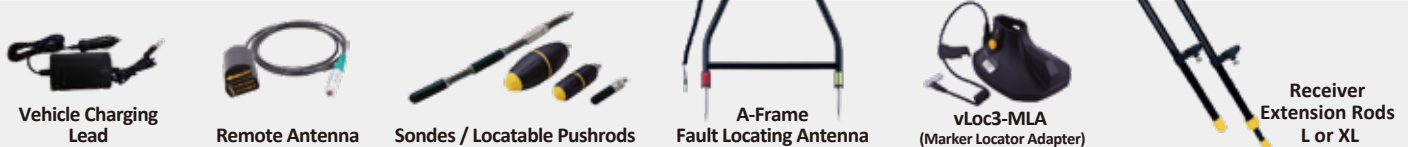
- Internal memory for 50 million records
- Bluetooth connectivity to external devices and data loggers
- Free MyLocator3 configuration software
- Free Cloud for data management and mapping via web portal and the free VMMap app
- WiFi connectivity for Over-the-Air Updates (coming soon)

vLoc3-5000 Receiver Specifications	
Construction	High impact ABS injection molded housing
Weight & Dimensions	4.6lbs (2.1kg) / 12.6in(L) x 4.9in(W) x 26.6in(H) (321mm x 124mm x 676mm)
Display	High visibility 4.3"/10 cm LCD, 480 x 272 pixel, 16-bit color, automatic backlighting
Battery options	Rechargeable custom Lithium-ion battery pack with 100-240V AC mains charger Can also be operated with six AA alkaline batteries (not included)
Battery life	Lithium-ion – typically 27-hours intermittent use at 70°F (21°C) Alkaline – typically 12 hours intermittent use at 70°F (21°C)
Operating frequencies	Configurable frequencies from 98Hz to 200kHz Power – 50Hz and 60Hz Radio – 10kHz - 22.7kHz bandwidth Signal Direction – showing the current direction of the transmitted signal Signal Select™ – Real-time measurement of signal bleed-over caused by capacitive or inductive coupling to other utilities: frequencies SiS-491Hz, SiS-982Hz, SiS-8440Hz, SiS-9820Hz, SiS-35kHz
Locating Screens	Classic Locate (Bar graph), Transverse Graph, Plan View (omnidirectional) Vector Locate (Offset Locating & Depth), 3D Sonde Locate
Data logging and transfer	50 Million records - Records include depth, current, frequency, mode, gain setting, signal strength, GPS coordinate, date and time, download data from the receiver using the free MyLocator3 desktop software, export as .csv, .kml, .shp, .xlsx, .tsv, .txt, .dxf files, access cloud data via free VMMMap app & web portal
Environmental	IP65

What's in the box



Popular Accessories



Compatible Transmitters



Loc3-10SiSTx

The Loc3-10SiSTx 10-Watt Transmitter provides full support for SiS (Signal Select™) frequencies up to 35kHz. The Broadband Loc3-10SiSTx transmitter has multiple induction and direct-connection frequencies ranging from 98Hz to 200kHz. Additional features of SD (Signal Direction), fault-find and multi-frequency transmit modes are included.

- Auto-impedance matching
- Fault-finding frequencies built in
- Transmit multiple frequencies at once

Local Vivax-Metrotech Distributor:

Vivax-Metrotech Corporation

3251 Olcott Street, Santa Clara, CA 95054, USA

T/Free: 800-446-3392

Tel: +1-408-734-3880

www.vivax-metrotech.com

Tag us on social media @vivax_metrotech



V1.7

Please visit our website for full product specifications.