



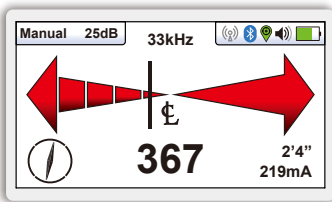
# vLoc3-9800 UTILITY LOCATOR

- Distance-sensitive Left/Right Guidance™
- Fully-automatic gain control
- Directional compass indicator
- Internal data logging
- Open Cloud Data Sync
- Bluetooth connectivity

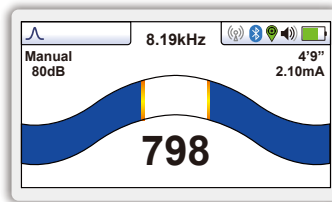
The **vLoc3-9800's** patented distance-sensitive Left/Right Guidance and audible tone guide you to the path of the buried utility. The current measurement and compass direction indicator features confirm that you are on target.

The user-configurable vLoc3-9800 contains two passive locate modes, fault-find mode, and a range of configurable frequencies from 98Hz to 131kHz. Visual and mechanical vibration alerts can be configured by the user providing warnings for shallow depth, overload, overhead cables, and excessive swinging. The optional A-Frame antenna for locating sheath faults or the attachable marker adapter for locating buried EMS markers expand the versatile locating system. The vLoc3-9800 is equipped with Bluetooth as standard. This enables communication with external data loggers, GPS devices or a smartphone with the free VMMMap app installed for data synchronization in the Cloud.

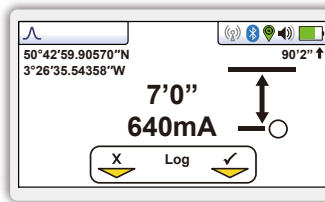
Use the free VMMAP cloud and mobile app to create real-time maps with GPS data and data from the locator such as time, date, depth of cover, current on the line, and add custom comments to each entry. The logged data can be exported for further analysis or use with GIS systems.



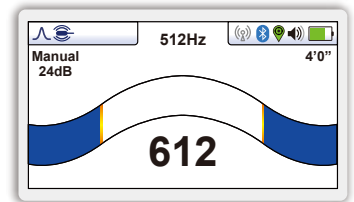
**Left/Right Locate Screen** - Shows left/right indication, signal strength with continuous depth and current from the line.



**Peak Locate Screen** - shows a peak curtain style bar graph, signal strength with continuous depth and current from the line.



**Line Info Screen** - shows the depth to the utility, current on the line and option to log the locate results. GPS coordinates are shown if active.



**Sonde Locate Screen** - shows a peak curtain style bar graph, signal strength and continuous depth for sonde locating.

**Alkaline and Li-ion Batteries**

- Alkaline = typically 12-hours intermittent use
- Li-ion = typically 27-hours intermittent use

**USB Data Port**

- Download data logs
- Update the receivers firmware
- Change configurations (frequencies and options)

**Accessory Port**

- Charge the Li-ion battery
- A-Frame Fault Locating Antenna
- Remote Antenna for positive line identification
- 12V charging lead

**Antenna Configuration**

- Distance Sensitive Left/Right Guidance



**Optional Accessory**  
A-Frame Fault Locator Antenna



**Ultra Bright Color LCD**

- High visibility 4.3"/10cm LCD
- Automatic backlighting

**Data Logging**

- GPS coordinates (via Bluetooth)
- 50 Million record internal storage
- Download data with free MyLocator software
- Upload data to free VMMMap Cloud via VMMMap app to create digital maps

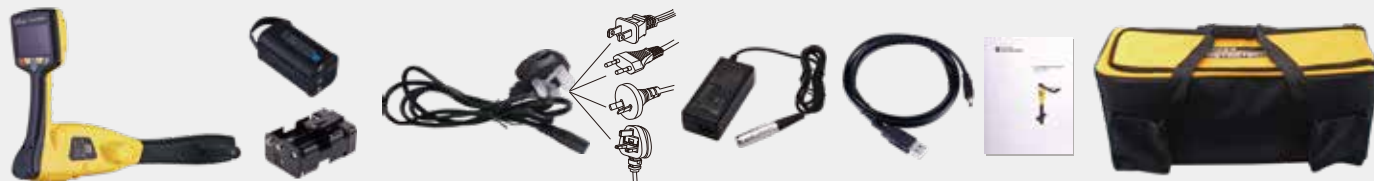
**Construction**

- IP65
- Lightweight at 4.6lbs./2kg

Attachable Marker Locating Adapter available as accessory

vLoc3-9800 Receiver Specifications	
<b>Construction</b>	High impact ABS injection molded housing
<b>Weight &amp; Dimensions</b>	4.4lbs (2kg) / 12.6in(L) x 8.6in(W) x 26.6in(H) (321mm x 219mm x 676mm)
<b>Display</b>	Transmissive 480 x 272 Pixel, 16-bit Color, High-visibility LCD, 4.3" / 10cm
<b>Battery options</b>	Rechargeable custom Lithium-ion battery pack including 100-240V AC mains charger Can be also operated with six AA Alkaline batteries (not included)
<b>Battery life</b>	Lithium-ion – typically 27-hours intermittent use at 70°F (21°C) Alkaline – typically 12 hours intermittent use at 70°F (21°C)
<b>Operating frequencies</b>	Configurable frequencies from 98Hz to 200 kHz Power - 50Hz and 60Hz Radio - 10kHz - 22.7kHz bandwidth
<b>Operating modes</b>	Classic Locate left/right indication and Sonde Locate
<b>Data logging and transfer</b>	50 Million records - Records include depth, current, frequency, mode, gain setting, signal strength, GPS coordinate, date and time (if Bluetooth active) Download data from the receiver using the free MyLocator3 software, export as xlx, txt, shp and kml files
<b>Environmental</b>	IP65

## What's in the box



## Popular Accessories



## Compatible Transmitters

### 1- Watt Transmitters



VM-550FF / VM-560FF

### 5-Watt Transmitter



Loc3-5Tx

### 10-Watt Transmitter



Loc3-10Tx

Local Vivax-Metrotech Distributor:

### Vivax-Metrotech Corporation

3251 Olcott Street, Santa Clara, CA 95054, USA

**T/Free: 1-800-446-3392**

**Tel: +1-408-734-3880**

www.vivax-metrotech.com

Tag us on social media @vivax\_metrotech



V1.7

Please visit our website for full product specifications.