



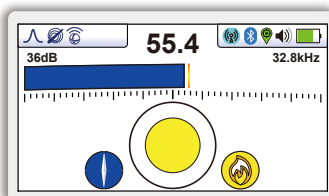
vLoc3-ML

UTILITY LOCATOR

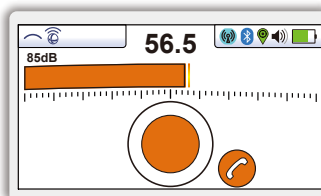
- Dual-purpose utility and marker locator
- Real-time color-coded EMF distortion alert
- Offset-locate modes (Vector and Plan View)
- Open Cloud Data Sync
- Bluetooth & WiFi connectivity

The **vLoc3-ML marker and utility locator** is a dual-purpose utility locator and EMS marker locator. With two sets of screened 3D antennas signal distortion is easily detected and displayed on the bright full-color display. Along with classic locate screen the vLoc3 offer new locate modes like Vector Locate Screen for fully-automatic non-walkover locating, Transverse Graph showing both peak and null simultaneously providing immediate measurement of signal distortion, Plan View showing the relative orientation of the cable at any angle, and a new graphical Sonde screen with 360° guidance arrow leading to the sonde location even when it is vertical.

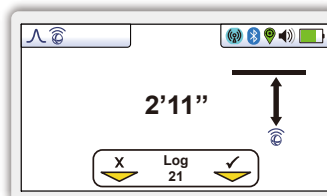
The highly user-configurable vLoc3-ML contains includes marker locate mode, eight passive locate modes, fault-find mode, Signal Direction (showing direction of outgoing current), and a range of configurable frequencies from 98Hz to 200 kHz. Audio, visual and vibration alerts can also be configured by the user providing warnings for shallow depth, overload, overhead cables, and excessive swinging. The vLoc3-ML is equipped with Bluetooth and WiFi as standard. This enables communication with external data loggers, GPS devices or a smartphone with the free VMMMap app installed for data synchronization in the also free VMMMap Cloud.



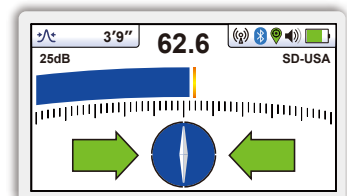
Dual Marker Plus Utility Mode - Shows a peak locate response for both marker and utility location simultaneously



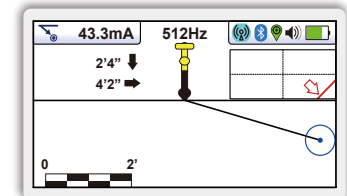
Dedicated Marker Mode - Shows a peak locate response from the buried marker



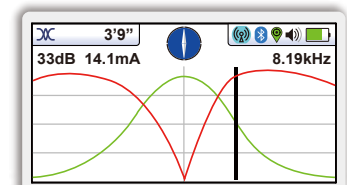
Marker Depth Readings and Logging Options - Are shown in the Dedicated Marker Mode



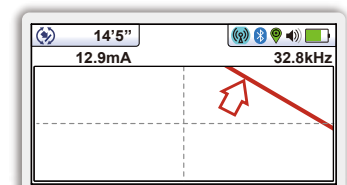
Classic Screen - As in previous vLoc locators, with the addition of three color-coded distortion levels



Vector Locate - Shows orientation, line position, and distance relative to the locator in 3D



Transverse Graph Screen - Is used to display the peak and null to compare distortion shape



Plan View Screen - Displays the theoretical line in 2D from above ground in omnidirectional mode

Li-ion and Alkaline Batteries

- Li-ion typically 27h intermittent use
- Alkaline typically 12h intermittent use

USB Data Port

- Update the receivers firmware
- Download data logs

Accessory & Charging Port

- Charge li-ion battery
- Remote Antenna
- A-Frame Fault Locating Antenna
- 12V DC charging lead

Antenna Configuration

- Two sets of 3D Antennas
- Omnidirectional antenna array

Marker Antenna Foot



Different EMS marker types



Ultra Bright Color LCD

- High visibility 4.3"/10cm LCD
- Auto backlighting



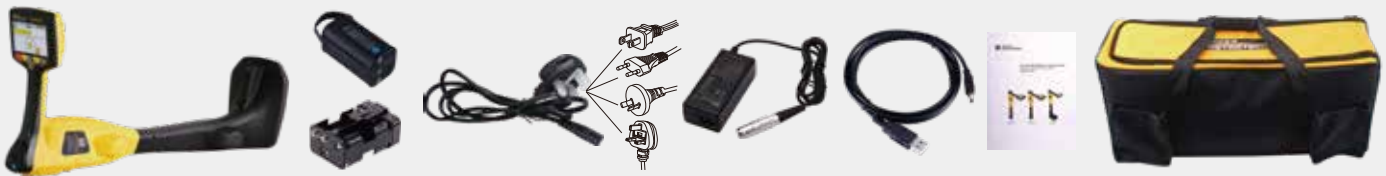
Data Management

- Internal memory for 50 million records
- Bluetooth connectivity to external devices and data loggers
- Free MyLocator3 configuration software
- Free Cloud for data management and maps via web portal and the free VMMMap app
- WiFi connectivity for Over-the-Air Updates (coming soon)



vLoc3-ML Receiver Specifications																																				
Construction	High impact ABS injection molded housing																																			
Weight and dimensions	5.7lbs (2.6kg) / 12.2in(L) x 6.3in(W) x 28.4in(H) (310mm x 159mm x 721mm)																																			
Display	High Visibility Color Display 4.3"/10cm LCD, 480 x 272 Pixel																																			
Battery options	Rechargeable custom Lithium-ion battery pack with 100-240V AC mains charger Can also be operated with six AA alkaline batteries (not included)																																			
Battery life	Lithium-ion – typically 27-hours intermittent use at 70°F (21°C) Alkaline – typically 12 hours intermittent use at 70°F (21°C)																																			
Operating frequencies	Utility locate: Configurable frequencies from 98Hz to 200 kHz <ul style="list-style-type: none"> • Power 50Hz and 60Hz • Radio - 10kHz - 22.7kHz bandwidth • Signal Direction (SD) - enhanced frequency giving direction of the outgoing transmitter current Marker Locate:																																			
	<table border="1"> <thead> <tr> <th>Ref #</th> <th>Utility</th> <th>Fre. (Hz)</th> <th>Ref #</th> <th>Utility</th> <th>Fre. (Hz)</th> <th>Ref #</th> <th>Utility</th> <th>Fre. (Hz)</th> </tr> </thead> <tbody> <tr> <td>1</td> <td>Power (Red)</td> <td>169,800</td> <td>4</td> <td>Telephone (Orange)</td> <td>101,400</td> <td>7</td> <td>Non-potable Water (Purple)</td> <td>66,350</td> </tr> <tr> <td>2</td> <td>Water (Blue)</td> <td>145,700</td> <td>5</td> <td>Gas (Yellow)</td> <td>83,000</td> <td>8</td> <td>EDF (French Power) (natural)</td> <td>40,000</td> </tr> <tr> <td>3</td> <td>Sanitary (Green)</td> <td>121,600</td> <td>6</td> <td>CATV (Orange/Black)</td> <td>77,000</td> <td>9</td> <td>Power - Europe (Blue/Red)</td> <td>134,000</td> </tr> </tbody> </table>	Ref #	Utility	Fre. (Hz)	Ref #	Utility	Fre. (Hz)	Ref #	Utility	Fre. (Hz)	1	Power (Red)	169,800	4	Telephone (Orange)	101,400	7	Non-potable Water (Purple)	66,350	2	Water (Blue)	145,700	5	Gas (Yellow)	83,000	8	EDF (French Power) (natural)	40,000	3	Sanitary (Green)	121,600	6	CATV (Orange/Black)	77,000	9	Power - Europe (Blue/Red)
Ref #	Utility	Fre. (Hz)	Ref #	Utility	Fre. (Hz)	Ref #	Utility	Fre. (Hz)																												
1	Power (Red)	169,800	4	Telephone (Orange)	101,400	7	Non-potable Water (Purple)	66,350																												
2	Water (Blue)	145,700	5	Gas (Yellow)	83,000	8	EDF (French Power) (natural)	40,000																												
3	Sanitary (Green)	121,600	6	CATV (Orange/Black)	77,000	9	Power - Europe (Blue/Red)	134,000																												
Operating modes	Marker locate, dual marker/utility locate mode, Classic locate, Transverse Graph, Plan View, Vector locate and sonde modes.																																			
Data logging and transfer	50 Million records internal data storage - include depth, current, frequency, mode, gain setting, signal strength, GPS coordinate, date and time. Download data from the receiver using the free MyLocator3 desktop software, export as .csv, .kml, .shp, .xlsx, .tsv, .txt, .dxf files, access cloud data via free VMMMap app & web portal																																			
Environmental	IP65																																			

What's in the box



Popular Accessories



Compatible Transmitters

1- Watt Transmitters



VM-550FF/VM-560FF

5-Watt Transmitter



Loc3-5Tx

10-Watt Transmitter



Loc3-10Tx

25-Watt Transmitter



Loc3-25Tx

Local Vivax-Metrotech Distributor:

Vivax-Metrotech Corporation

3251 Olcott Street, Santa Clara, CA 95054, USA

T/Free: 1-800-446-3392

Tel: +1-408-734-3880

www.vivax-metrotech.com

Tag us on social media @vivax_metrotech



V1.6

Please visit our website for full product specifications.

www.vivax-metrotech.com | www.vxmt.com