

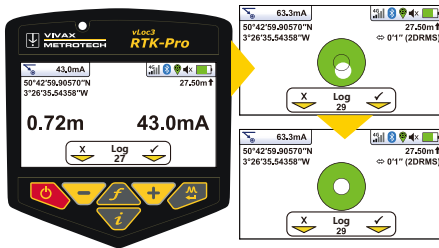
RTK-Pro

Utility Locator with Survey-Grade GNSS

- One-hand locating and mapping to save time and costs
- Fully-integrated RTK-GNSS receiver with survey-grade accuracy
- Data capturing with the touch of a button
- Open Cloud Data Sync for GIS
- No additional devices necessary

The **vLoc3 RTK-Pro** is the first to add Real Time Kinematic GNSS accuracy to a utility locator for mapping. The smart combination of utility locating and surveying in one device makes it super easy to map and capture objects for GIS and asset management. No extra devices needed. Based on the vLoc3 technology and its benefits, a whole new type of tool was created to make field work way easier. The operator can collect both utility location data along with the geographical coordinates of the points with survey-grade accuracy within the range of centimetres.

The RTK-Pro is designed for all operator levels, utilizing user-friendly and intuitive locate screens. The operator simply collects the utility data with the press of a button. The innovative tilt compensation with electronic spirit level facilitates the capture of precise data for every log. The user-configurable vLoc3 receiver contain a broad range of configurable frequencies from 98Hz to 200kHz, different passive locate modes and a fault find mode. Visual and vibration alerts can also be configured providing real-time warnings for shallow depth, overload, overhead cables, and excessive swinging. The Bluetooth module enables connection with external devices such as smartphones. All captured data is saved in the receivers internal memory and sent to the free VMap Cloud and VMap Pro Mobile App. The data can be exported in all common formats for mapping programs (GIS). Optional Plugin accessories (A-frame for locating sheath faults, Marker Locator Adapter for locating EMS markers and a handheld remote antenna for positive line identification) can be connected to the device to extend the range of functions.



In addition to the standard vLoc3 locating modes, the vLoc3 RTK-Pro offers special screens for point capture and tilt compensation, as well as attribute selection and a walk back feature to coordinates.




In the map view, you can review the position points and display or delete the captured object data via the app or web portal. Add walk back points or export the measurement data in common file formats for further processing in GIS.

 **GNSS Satellite Tracking**
- GPS, GLONASS, Galileo, BeiDou

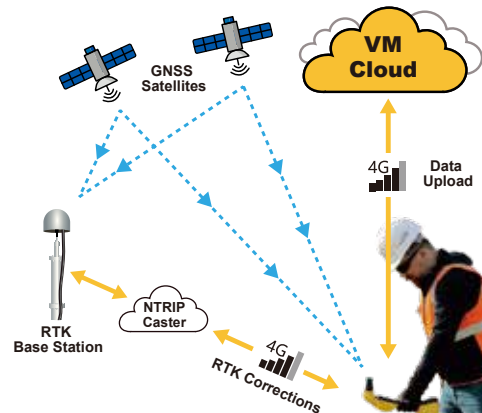
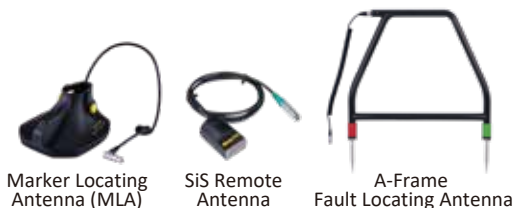
Ultra Bright Color LCD 4.3"
with automatic backlighting





Open Cloud Data Sync

Data Connectivity
- 4G LTE via internal Nano-SIM
- Via WiFi connection without SIM
- Bluetooth connection to external devices and for displaying your live location in the VMap Pro app

Log data with press and tilt 
- Real time 2DRMS horizontal accuracy
- Tilt compensation for accurate capturing

Plugin Accessory & Charging Port



Specifications vLoc3 RTK-Pro Receiver	
Display	High Visibility Color Display 4.3"/10cm (480 x 272px) with automatic backlighting
Battery life	16 hours of continuous use with Lithium-ion battery
Operating frequencies	<ul style="list-style-type: none"> - Configurable frequencies from 98Hz to 200kHz - Signal Select SiS-8440Hz, SiS-9820Hz (Real-time measurement of signal bleed-over caused by capacitive or inductive coupling to other utilities) - Power 50Hz and 60Hz - Radio 22.7kHz, 10kHz bandwidth
Locating Screens	<ul style="list-style-type: none"> - Classic Screen with bar graph indicator with Peak, Null, simultaneous Peak with arrows, and Omni Peak - Vector Locate when locating over the utility is not possible, the offset and depth are displayed - Plan View displays the theoretical line in 2D from above ground in omnidirectional mode - Transverse Graph is used to analyze the shape and distortion of the electromagnetic fields - Sonde Screen 360° arrow guidance directly to the sonde with distinct symbols
Data logging and transfer	<ul style="list-style-type: none"> - Real-time upload connection to the free VMMMap Cloud via sim card or WiFi connection - Analyze data via VMMAP web portal or free VMMMap app - Export data in .csv, .kml, .shp, .txt, .dxf, .xls or .xlsx file format for GIS or asset management software
GNSS Features	<ul style="list-style-type: none"> - Satellites Tracked: GPS/QZSS, GLONASS, Galileo, BeiDou GPS L1C/A L2C, GLO L1OF L2OF, GAL E1B/C E5b, BDS B1I B2I, QZSS L1C/A L2C - Convergence time RTK < 10 sec - Acquisition: Cold starts = 24s, Reacquisition = 2s - Position accuracy RTK 0.01 m + 1 ppm CEP* *Dependent on atmospheric conditions, baseline length, GNSS antenna, multipath conditions, satellite visibility and geometry
NTRIP	<ul style="list-style-type: none"> - Compatible with NTRIP Casters with RTCM 3 output messages - Real time reference station connection status displayed on the receiver - Real time horizontal accuracy in 2DRMS
Cellular Connection	<ul style="list-style-type: none"> - 4G with fallback - LTE FDD bands 2, 4, 5, 7, 17 - UMTS/HSPA [MHz] 850, 900, 1700, 1900, 2100
Weight	- 2.4 kg
Environmental	- IP65
Dimensions	 <p>76cm (height), 38cm (width), 12.6cm (depth), 8.5cm (width of handle)</p>
What's in the Box:	<ul style="list-style-type: none"> - Li-ion battery pack with charger - Alkaline battery tray - Mini USB cable - User manual - Carry bag 
Accessories	 <ul style="list-style-type: none"> A-Frame Fault Locating Antenna Clip-on Stand & Tall-Adapter Transmitter (5-Watt, 10-Watt, 25-Watt, 150-Watt) Remote Antenna Marker Locating Adapter MLA
Warranty	24 months (extendable to 3 years)

Local Vivax-Metrotech Distributor:

Vivax-Metrotech Corporation

3251 Olcott Street, Santa Clara, CA 95054, USA

T/Free: 1-800-446-3392

Tel: +1-408-734-3880

www.vivax-metrotech.com

Tag us on social media @vivax_metrotech



V1.5

Please visit our website for full product specifications.