


Which firmware version do I have?

The **About Screen** shows the control module's DVR and MCU firmware versions and release dates.

The product's web page on our website www.vxmt.com, will show the latest firmware versions available in the Downloads section.

1. Press the **F10 Menu** twice to bring up the **Setup** menu.
2. Use the **down**  arrow key to scroll down to the **About** selection.
3. Press **Enter** and the firmware version information will be displayed.



Make a note of the control module's current software version before running the update. You can compare the before and after versions when the update is completed.

Update the Control Module Firmware

The firmware can be updated by the vCam Mobile Controller (VMC) app or by downloading the update file onto a USB thumb drive and manually installing it.

Over-The-Air Updates (via vCam Mobile Controller App)



All vCam-6 control modules running firmware version DVR_033 or later can use the vCam Mobile Controller app to update their firmware.

1. Turn on the vCam-6 and activate the Wi-Fi by pressing the F11 Wi-Fi Key. The Wi-Fi icon will appear on the LCD next to the battery icon.
2. Launch the vCam Mobile Controller app and connect to the vCam-6.
3. If a new update is available, a pop-up dialog box will appear advising so. Select **OK**.
4. Tap on the **Settings** icon to enter the Settings sub-menu.
5. Tap on **Over-The-Air System Update** then tap on **Update Now**.
6. Tap on **OK** to start the update.
7. A progress bar will appear during the update. When the update is complete the unit will reboot and return to the connection screen. The pop-up message will show a countdown to the reconnect screen.
8. After the unit has rebooted you are ready to reconnect and use the control module.

A new update is now available. Go to Settings -> Over-The-Air System Update to update the software

OK

Firmware Update - Installing: 55 %

Firmware Update

The Unit was successfully updated and it will be restarted. 48s auto reconnect.

Manual Update by USB Thumb Drive

Firmware upgrades come in the form of ".bin" (for DVR updates) and ".soc" (for processor updates) extension files. It may be necessary to upgrade one or both. The order in which they are updated does not matter. The firmware files can be obtained from our website in the product's download section, an authorized service center, or a local Vivax-Metrotech office. Your local distributor can also perform an update at no charge. USB thumb drives or SD cards can be used to perform the update.

The firmware update files must be installed on the **USB device's "root directory."** Specifically, the files must be visible when viewing the contents of the SD or USB device. The files **cannot be compressed or put in a folder**.



Please do not interrupt the update once it has started. Update the firmware while it is running under AC power.



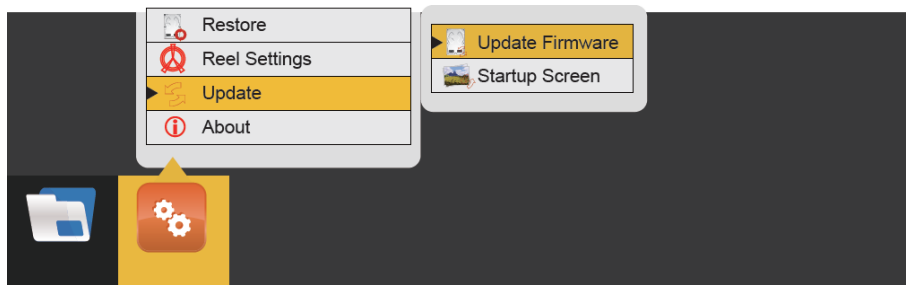
Check our YouTube Channel for an instructional video on manual firmware updates.

1. Extract the firmware update files and copy the .bin or .soc files to a USB device. **The files must be located in the drive's root directory; that is, the files must not be compressed or stored in a folder on the drive.**
2. Plug the SD or USB device into the control module.
3. Press the **F10 Menu** key twice to bring up the **Setup** menu.

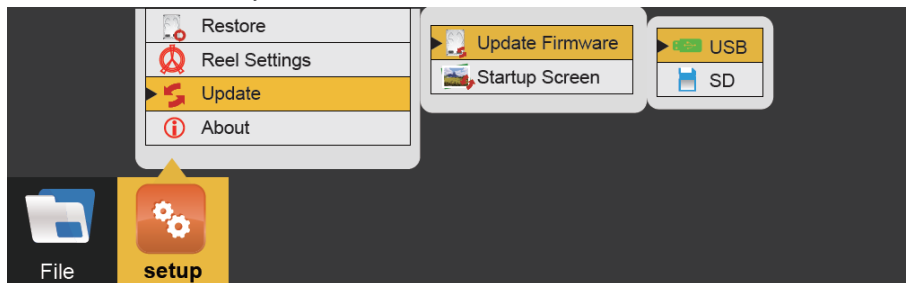
4. Use the **down** ↓ arrow key to scroll down to the **Update** sub-menu. Press the **Enter** key.



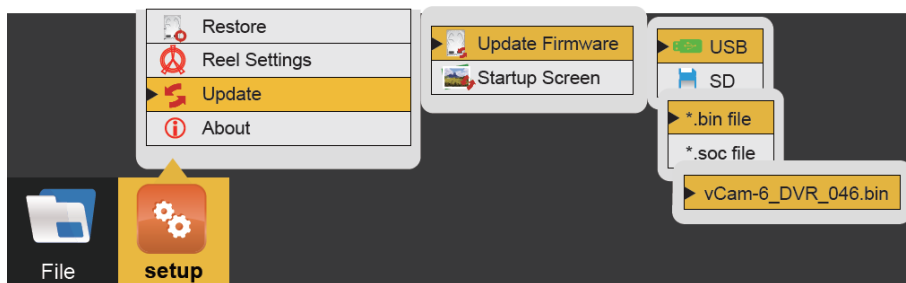
5. Use the **up** ↑ and **down** ↓ arrow keys to highlight and select **Update Firmware** and press Enter.



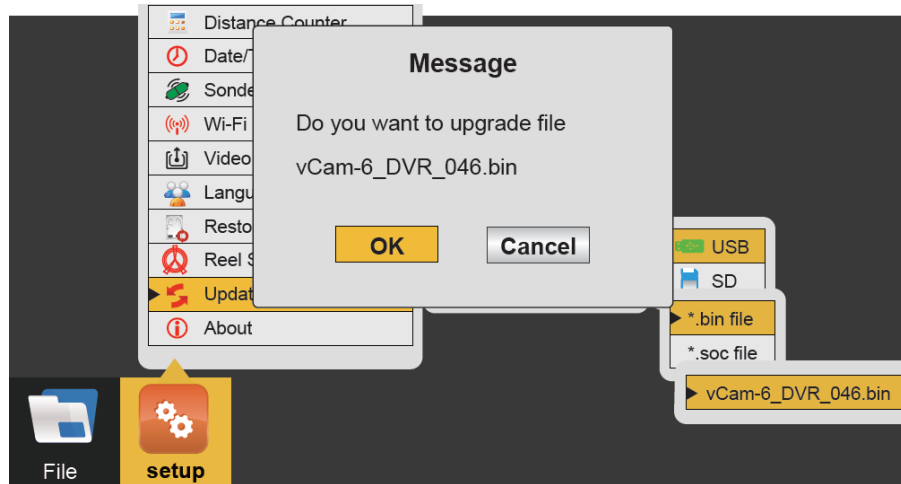
6. Use the **up** ↑ and **down** ↓ arrow keys to select the SD or USB device with the firmware loaded onto it. Press the **Enter** key.



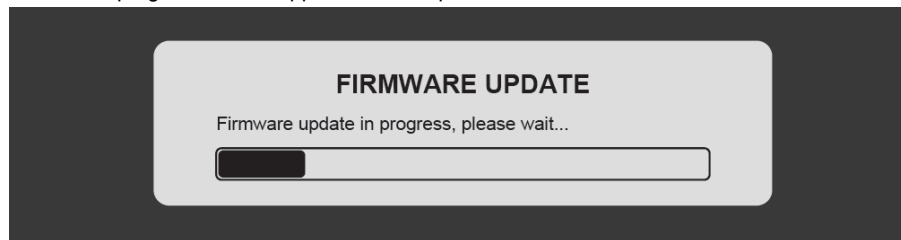
7. Use the **up** ↑ and **down** ↓ arrow keys to select which file type is used for the update: .bin or .Soc and press the **Enter** key.



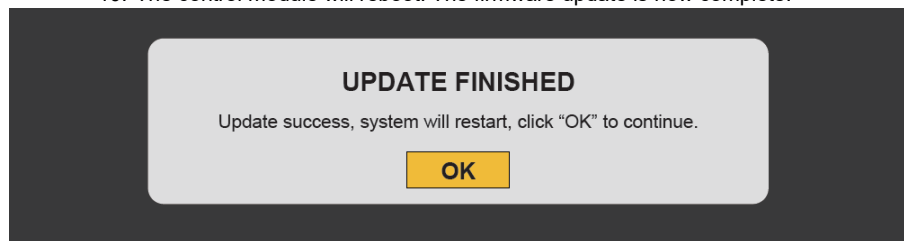
8. Use the **up** ↑ and **down** ↓ arrow keys to highlight and select the .bin or .soc file and press **Enter** key.



9. The **FIRMWARE UPDATE** progress bar will appear. Let the update run until it finishes.



10. The control module will reboot. The firmware update is now complete.



Verify that the firmware update was successful by checking the firmware version in the **About** section of the setup menu.